



Lincolnway

SPECIAL RECREATION
ASSOCIATION

ANNUAL REPORT
JUNE 1, 2019-MAY 31, 2020



ABOUT THE ASSOCIATION



Formation

Since 1976, the Lincolnway Special Recreation Association (LWSRA) has provided recreation services for individuals with disabilities through a cooperative agreement with its member park districts to help their residents enjoy active, healthy and more independent lifestyles through a variety of recreational and social opportunities.

Member Districts

The association is made up of seven member districts that consist of the Frankfort, Frankfort Square, Manhattan, Mokena, New Lenox, Peotone and Wilmington Island Park Districts. As part of the agreement, each of the members provide a representative to serve on the agency Board of Directors.

SSSRA Co-operative Agreement

A co-operative agreement with neighboring South Suburban Special Recreation Association allows participants of both SRA's to register for a majority of the neighboring programs at in-district rates.

Special Agreements

Special agreements with the Village of Monee and Homer Township provide assistance to their residents to cover a portion of their non-resident registration fee for each program.

Population Served

Participants start as young as 2 years old and can continue through adulthood! Programs are age and interest oriented. Within each offering, participants will work in smaller groups with age appropriate peers. Individuals with physical impairments, cognitive, sensory or other needs may participate in programs ranging from athletics competition, health & fitness, social events, special events, vacation trips, after school care and more.



PARTICIPATION

June 1, 2019-May 31, 2020

434 INDIVIDUALS
CHANGE FROM PREVIOUS YEAR +2.4%

231 UNIQUE PROGRAM OFFERINGS
ACROSS THREE SEASONAL BROCHURES

3,269 PROGRAMS PARTICIPATED IN
CHANGE FROM PREVIOUS YEAR +1.4%

SCHOLARSHIPS

June 1, 2019-May 31, 2020

87 SCHOLARSHIPS AWARDED
REQUESTS AWARDED: **100%**

\$9,956 AMOUNT AWARDED

OUTREACH EVENTS

June 1, 2019-May 31, 2020

13 DISABILITY AWARENESS
EVENTS

9 COMMUNITY PARK PARTIES
INCLUDING ALL MEMBER DISTRICTS

600+ CHILDREN & ADULTS IN
ATTENDANCE AT TRUNK OR TREAT


81 TRICK OR TROT 5K RACERS
PARTNER EVENT WITH HEATHER GLEN HOA

414 LUNCH WITH THE GRINCH ATTENDEES

122 FAMILY HOLIDAY PARTY ATTENDEES

202 JUMPFEST ATTENDEES

COVID-19 IMPACT

 **33** PROGRAMS OR SESSIONS CANCELLED

\$40,000+ REFUNDS ISSUED

2020 DISABILITY FAIR CANCELLED



MISSION

To provide recreation and leisure services for individuals with physical or intellectual disabilities while promoting greater disability awareness in the community.

VISION

A community without limits for individuals with disabilities.

CORE VALUES

- | | |
|---------------|-------------|
| Community | Training |
| Opportunities | Reliability |
| Recreation | Unity |
| Education | Safety |
| | Trust |

MEMBER CONTRIBUTIONS

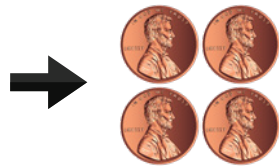
HOW DOES IT WORK

A Special Recreation Cooperative is formed when two or more park districts agree to work together to provide better recreational opportunities for their residents with disabilities. Districts that are members of an cooperative are able to tax up to an additional four cents per \$100 of assessed value for ADA related activities.

For every \$100 of Equalized Assessed Value of your home



You pay your park district an extra 4 cents on your property tax bill



WHERE THE 4 CENTS GOES

HERE'S THE SPLIT

Two cents go to LWSRA towards the annual operating budget.



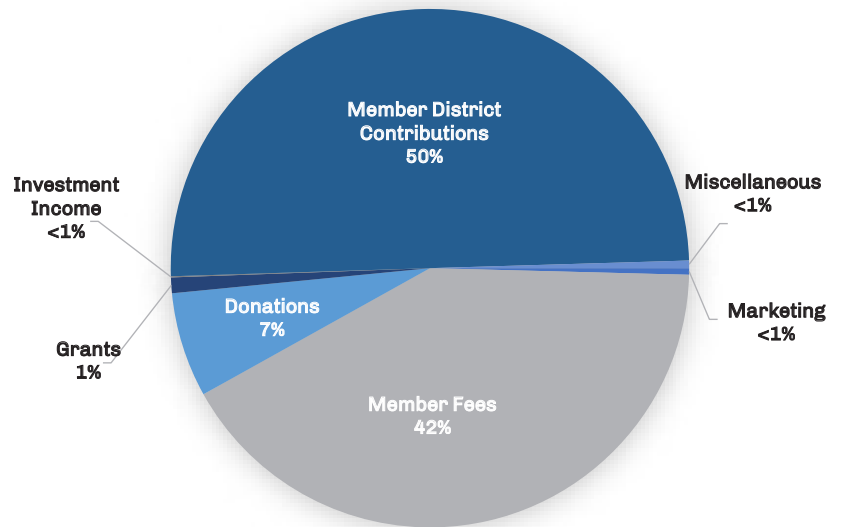
1 3/4 cents stay with the park district to complete ADA projects at their facilities and parks.

1/4 of a cent goes towards the annual LWSRC building payment.

REVENUE

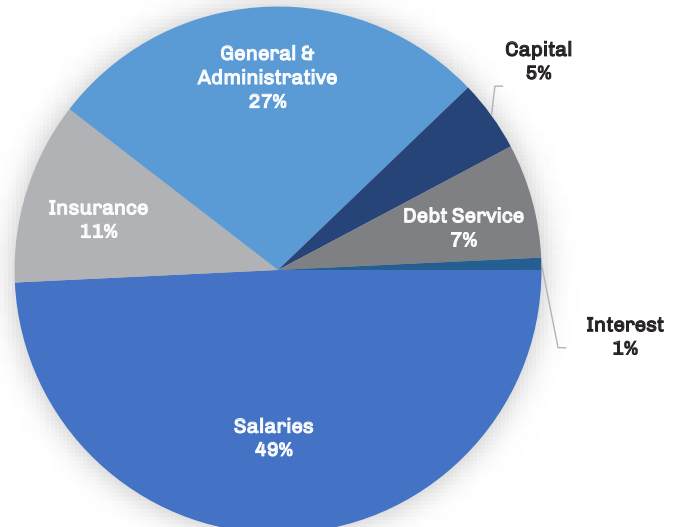
Member District Contributions	\$947,744
Member Fees	\$786,300
Donations	\$123,851
Grants	\$18,500
Miscellaneous	\$8,887
Marketing	\$7,714
Investment Income	\$1,336
TOTAL	\$1,894,332*

*Federal Paycheck Protection Program (PPP) Loan received in 2020 for \$252,682 due to COVID-19 not included.



EXPENDITURES

Salaries	\$1,005,738
General & Administrative	\$559,007
Insurance	\$229,010
Debt Service	\$143,310
Capital	\$90,077
Interest	\$15,303
TOTAL	\$2,042,445



TAKING A LOOK BACK

WITH THE EXECUTIVE DIRECTOR

ANNUAL REPORT

June 1, 2019-

May 31, 2020



*Keith Wallace, CPRP
Executive Director*

As an organization, every day we strive to put our best foot forward to serve in the most efficient and effective ways possible. The highlights of this year's report look at many of our accomplishments and activities which advance our vision and ensure the provision of recreational services are met for individuals with disabilities.

2020 proved to be a challenging year for the entire world. LWSRA saw our share of challenges as we navigated the pandemic. Even though the pandemic closed our doors in March, the team weathered the storm and took the opportunity to innovate and create. We transitioned to virtual activities to keep our participants and families engaged. Our full-time staff stayed busy with trainings, planning and implementing of virtual programs. Unfortunately, many of our fantastic part time staff had to move on. The bottom line was no on-site programming meant no work.

2020 also brought an opportunity for growth with staff. Melissa Jensen was promoted to Superintendent of Recreation and our part-time Recreation Specialist, Christa McDonough-Sullivan was offered a full-time position.

We are now in the seventh year of our forever home. We continue to find ways to build our services. Every day we are expanding our outreach to new families and communities. This has led to our tremendous growth.

As for programing, one of our goals is to keep program fees low for our residents. This means the agency relies on non-traditional revenue sources such as fundraising events and donations to reduce costs and enhance the quality of programs. The agency hosts numerous fundraisers yearly to accomplish this goal.

LWSRA receives revenue from three major sources: 1) member district contributions, 2) program fees and 3) donations, grants & fundraising.

The LWSR Foundation also contributes to the agency's overall operation plan. The Foundation's annual donation has increased approximately \$5,000 per year since 2013 with the 2019 donation being its biggest yet at \$45,000. Even in the midst of the pandemic the Foundation's 2020 contribution totaled \$35,000. Foundation events included Giving Tuesday and the 12th Annual Golf Outing.

I hope this report has given you insight into the work that we do and the progress made. Our staff is one of the best resources and I'm proud to say we have a team committed to working together for the success of our agency.

I would like to thank all of our volunteers, supporters and partners for their dedication and commitment to LWSRA. Lastly, we take a moment to recognize some of LWSRA's dedicated and passionate, long-term staff.

20+ years

Ralph Krauss (1981)

15-19 years

Tom Krauss (2003)

Keith Wallace (2006)

10-14 years

Melissa Jensen (2008)

Jennifer Casey (2008)

Tami Pareti (2009)

Juanita Williams (2011)

5-9 years

Kelsey Hanson (2012)

Nadine Kahl (2012)

Kasey Stelmaszek (2012)

Alexis Berezin (2013)

Jacob Chudzik (2013)

Brittany Oskielunas (2013)

Scott Pedziwiatr (2014)



Lincolnway
SPECIAL RECREATION
ASSOCIATION

Building a Community Without Limits